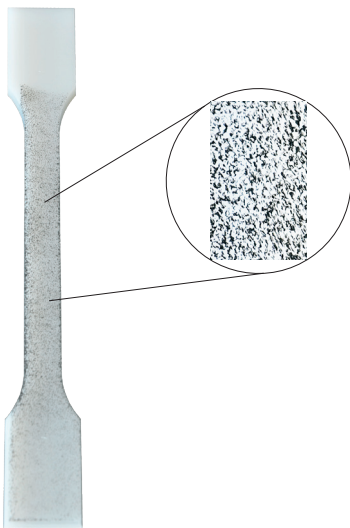
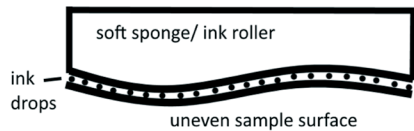
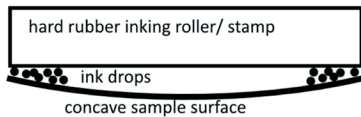
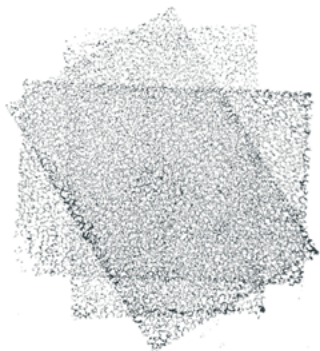


Speckle Pattern Toolkit

for StrainMaster



Speckle pattern applied with a foam roller



Speckle pattern applied with a sponge

Digital Image Correlation matches the surface pattern on specimens subjected to deformation processes between successive acquired images. If there is no sufficiently identifiable natural pattern on the surface of the specimen, an artificial pattern must be applied. Spray paints are often used in such cases, but a disadvantage these is the solvents present which can degrade the specimen surface. Additionally, a fume cupboard may be required to extract the odours, or one may have to apply the speckle pattern outdoors. Utilizing stamps or rollers are other methods use, however classic stamp paints do not adhere to plastic or metal surfaces. Also, on uneven surfaces, hard rubber stamps are difficult to use because they do not conform to the surface shapes.

The **StrainMaster Speckle Pattern Toolkit** is an easy-to-use alternative to spray cans and conventional stamps.



A special foam roller allows the application of a particularly fine speckle pattern similar to that provided by aerosol paints. On larger areas patterns can be produced with the porous, soft rubber sponge. Multiple applications of the sponge to the specimen surface increases the density of the speckle pattern.

The paint used for the **StrainMaster Speckle Pattern Toolkit** is water-based with additives that ensure it adheres to plastic and metal surfaces. The paint is completely non-toxic and easily cleaned from the surface with soap and water!

The tool kit includes the foam roller for fine patterns, a hand roller, the porous sponge for coarse patterns and an extra-large stamp pad. The paint can be ordered separately depending on the application. We currently offer white, black and green-fluorescent paint, but others may be available upon request. The roller and sponge can be cleaned with water and soap for re-use.

LaVisionUK Ltd

2 Minton Place / Victoria Road
Bicester, Oxon / OX26 6QB / United Kingdom
E-Mail: sales@lavision.com / www.lavisionuk.com
Phone: +44-(0)-870-997-6532 / Fax: +44-(0)-870-762-6252

LaVision GmbH

Anna-Vandenhoeck-Ring 19
D-37081 Göttingen / Germany
E-Mail: info@lavision.com / www.lavision.com
Tel. +49-(0)551-9004-0 / Fax +49-(0)551-9004-100

LaVision Inc.

211 W. Michigan Ave. / Suite 100
Ypsilanti, MI 48197 / USA
E-mail: sales@lavisioninc.com / www.lavisioninc.com
Phone: (734) 485 - 0913 / Fax: (240) 465 - 4306

Ordering information

Part number	Description
1103350	Speckle pattern toolkit; includes 1 x handle, 2 x foam roller 1 x sponge, 1 x extra-large ink pad, all stored in a case; paint to be ordered separately depending on the application
1010933	White paint to apply speckle pattern; bottle with 150 ml
1010934	Black paint to apply speckle pattern; bottle with 150 ml
1011149	Green-fluorescent paint to apply speckle pattern; bottle with 150 ml
1010932	Porous sponge for creating coarse speckle patterns (spare part); 10 cm x 5 cm x 15 cm
1010936	Super fine foam roller for creating fine speckle pattern (spare part); 3.3 cm x 5 cm
1010935	Extra-large ink pad (spare part); 240 mm x 120 mm

Data provided by LaVision are believed to be true. However, no responsibility is assumed for possible inaccuracies or omissions. All data are subject to change without notice.

Sep-17

LaVisionUK Ltd

2 Minton Place / Victoria Road
Bicester, Oxon / OX26 6QB / United Kingdom
E-Mail: sales@lavisoin.com / www.lavisoinuk.com
Phone: +44-(0)-870-997-6532 / Fax: +44-(0)-870-762-6252

LaVision GmbH

Anna-Vandenhoeck-Ring 19
D-37081 Göttingen / Germany
E-Mail: info@lavisoin.com / www.lavisoin.com
Tel. +49-(0)551-9004-0 / Fax +49-(0)551-9004-100

LaVision Inc.

211 W. Michigan Ave. / Suite 100
Ypsilanti, MI 48197 / USA
E-mail: sales@lavisoininc.com / www.lavisoininc.com
Phone: (734) 485 - 0913 / Fax: (240) 465 - 4306